

Phelan Flats

- * ALL NEW CONSTRUCTION
- * TWO EQUAL MASTER SUITES WITH WALK-IN CLOSETS
- * OPEN LIVING/DINING/ KITCHEN AREA
- * LARGE KITCHEN INCLUDES PENINSULA ISLAND
- * STAINLESS-STEEL FINISH APPLIANCES
- * IN-UNIT LAUNDRY ROOM (CONNECTIONS ONLY)
- * PRIVATE ENTRY AND PORCH FOR EACH UNIT
- * SECURITY SYSTEM
- * OFF-STREET PARKING
- * 9' CEILINGS IN LIVING/KITCHEN AND BEDROOMS

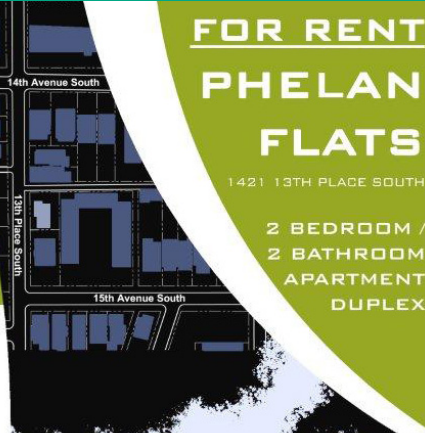
FOR MORE INFORMATION OR TO RECEIVE AN APPLICATION

GREENVINE PROPERTIES
(205) 706-3741



- * EXCELLENT VIEWS OF VULCAN, THE CLUB, AND FOURTH OF JULY FIREWORKS!
- * FLAT-OVER-FLAT DUPLEX
- * FOUR BLOCKS FROM UAB
- * TWO BLOCKS FROM LOCAL RESTAURANTS
- * CLOSE TO CITY BUS ROUTE
- * FIRST "LEED FOR HOMES" MULTI-FAMILY DEVELOPMENT IN ALABAMA:

GREEN DESIGN!



A flyer for Phelan Flats touts its green credentials and includes a graphic that shows its in-town location.

By Philip Morris



Like a number of other Birmingham firms, Herrington Architects uses a renovated city center loft-style building for its studios. But now the firm has added another component in its commitment to urbanism: Greenvine Properties. The in-house development company has completed Phelan Flats, an in-town rental residential project seeking LEED Gold certification.

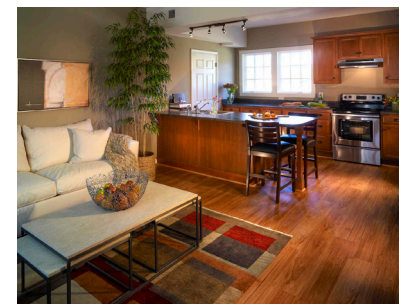
Located near Phelan Park in the residential area just south of UAB, the two-story, 2,150-square-foot, flat-over-flat structure features two bedroom/two bath units designed to appeal to the local market. The Craftsman-style duplex, clad in fiber-cement siding, fits the neighborhood context while energy-efficient aluminum-clad windows, fiberglass-clad doors and blown-in wall insulation enhance performance. Energy-star appliances and low-flow faucets, showers and toilets are also used. A rain garden slows and filters runoff.

Phelan Flats also benefits from its location within an historic neighborhood with many services and jobs a short walk or ride away, and it creates a new model for infill development.

Photography: © Sherwood Cox



Herrington Architects occupies a single-level loft space just south of the historic Railroad Reservation in Birmingham.



Each unit features an open living and kitchen space with model furnishings from Ethan Allen.



Windows are of generous size but very energy efficient.