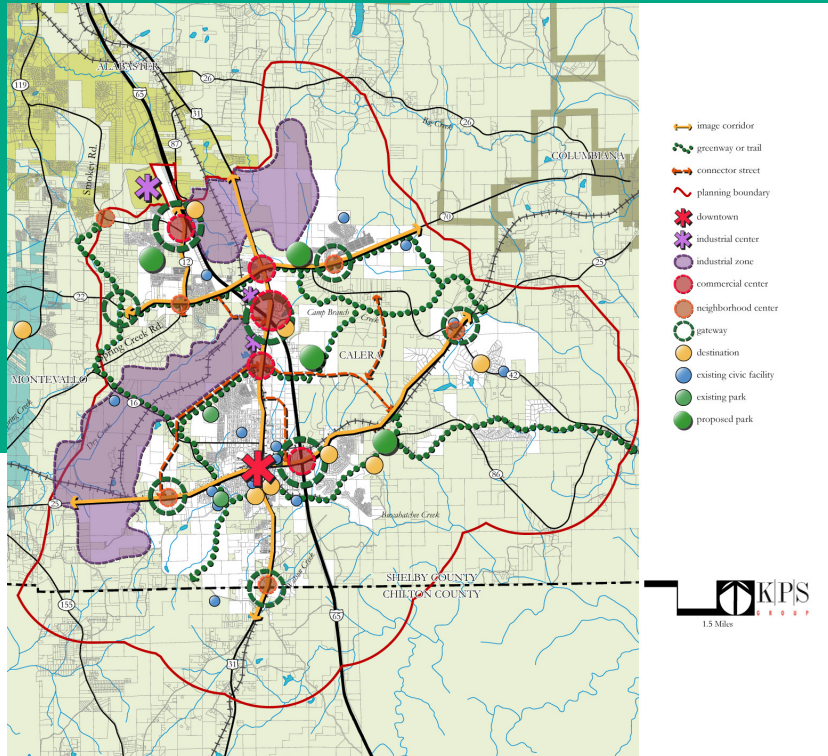


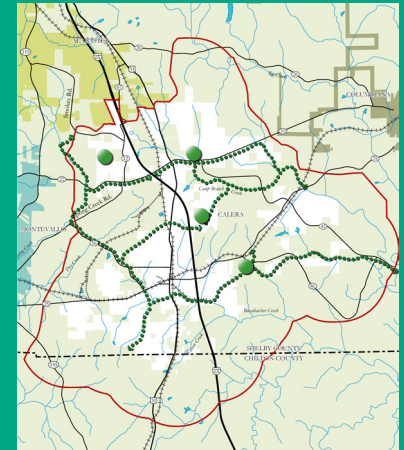
Calera Comprehensive Plan



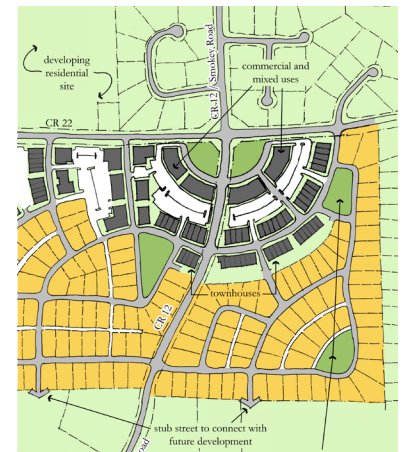
The strategic concept serves as a general guide for development and public improvements with specific plans generated as needed.



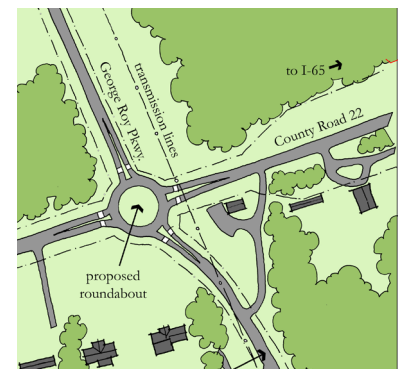
Graphics courtesy of KPS Group



A system of parks and greenways would tie together all neighborhoods.



This plan shows how a neighborhood center would be created at a redesigned intersection.



A new roundabout would allow a new street connection while avoiding an awkward road alignment.

By Philip Morris



A citywide comprehensive plan was adopted by the City of Calera Planning Commission in August 2009. Sponsored by the Regional Planning Commission of Greater Birmingham and prepared with the help of planners with KPS Group and traffic engineers at Skipper Consulting Inc., it grew out of a series of town meetings held in the Shelby County community.

Major elements include:

- The city's "green infrastructure" will be conserved and respected.
- Calera's gateways will be well defined; the design of its arterial and collector streets and development alongside them will reflect a positive image.
- Downtown's historic architecture will be preserved and reinvestment will reflect the heritage of the community.
- Access to all arterial and collector streets will be managed carefully to conserve their capacity.
- New streets will be developed to interconnect parts of the community divided by I-65, railroads and other barriers.
- The city's pedestrian network, including a greenway and trail system, will interconnect neighborhoods with activity centers, schools and park and recreation facilities.
- Neighborhoods will have a strong sense of place, each with a focus area of appropriate function and scale.

The graphics shown here show the full strategic plan plus some of these components. The full plan can be viewed at www.rpcgb.org.